

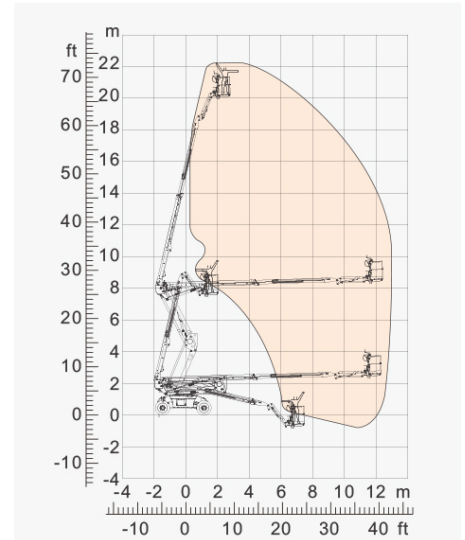
**SPECIFICATIONS**

Size	Metric	British
Max. Working Height	22.21m	72ft 10in
Max. Platform Height	20.21m	66ft 3.7in
Max. Horizontal Reach	12.72m	41ft 8.8in
Overall Length(Stowed) <b>A</b>	9.55m	31ft 4.0in
Overall Width(Stowed) <b>B</b>	2.29m	7ft 6.2in
Overall Height(Stowed) <b>C</b>	2.49m	8ft 2.0in
Platform Size(Length×Width)	1.83m×0.79m	6ft × 2ft 7.1in
Turntable Tailswing	0.93m	3ft 0.6in
Ground Clearance <b>D</b>	0.279m	11in
Wheelbase <b>E</b>	2.4m	7ft 10in
Turning Radius(Inside/Outside)	1.56m/2.57m	5ft 1.4in/8ft 5.2in
Tyres	315/55 D20	315/55 D20
Up and Over Clearance	8.13m	26ft 8.1in
Max. Down Probing Depth	1.77m	5ft 9.7in

Performance		
S.W.L	230kg	507lb
Max. Occupants	2	2
Gradeability	30%	30%
Travel Speed(Stowed)	6.1km/h	6.1km/h
Travel Speed(Raised)	1.1km/h	1.1km/h
Max.Working Slope	X-5°/Y-5°	X-5°/Y-5°
Turret Rotation	360 °Continuous	360 °Continuous
Platform Rotation	180°	180°
Jib Movement	130°	130°

Weight		
Overall Weight	10100kg	22266lb

Power		
Battery	24×2V/375Ah	24×2V/375Ah
Charger	48V/60A	48V/60A
Hydraulic Oil Tank	67L	67L



Range Of Motion

