

# Self-Propelled Telescopic Booms

S®-45 XC™

## Specifications

Models	S-45 XC	
Measurements	Metric	US
Working height maximum*	15.56 m	50 ft 6 in
Platform height maximum	13.56 m	44 ft 6 in
Horizontal reach maximum	11.02 m	36 ft 2 in
Below ground reach	1.27 m	4 ft 2 in
<b>A</b> Platform length	0.91 m	3 ft
<b>B</b> Platform width	2.44 m	8 ft
<b>C</b> Height - stowed	2.51 m	8 ft 3 in
<b>D</b> Length - stowed	9.47 m	31 ft 1 in
<b>E</b> Width	2.49 m	8 ft 2 in
<b>F</b> Wheelbase	2.46 m	8 ft 1 in
<b>G</b> Ground clearance - center	0.32 m	12.5 in

## Productivity

Maximum lift capacity - unrestricted	300 kg	660 lb
- restricted	454 kg	1,000 lb
Platform rotation	160°	
Vertical jib rotation	133°	
Turntable rotation	360° continuous	
Turntable tailswing	0.97 m	38 in
Drive speed - stowed	6.4 km/h	4.0 mph
- raised or extended	1.1 km/h	0.68 mph
Maximum slope rating**	45%	
Turning radius - inside	2.08 m	6 ft 10 in
- outside	4.78 m	17 ft 2 in
Controls	12 V DC proportional	
Tires - RT foam-filled	315/55D20-12 ply, 19.5 in wheel	
Tilt sensor activation	front to back: 7° and side to side: 5°	

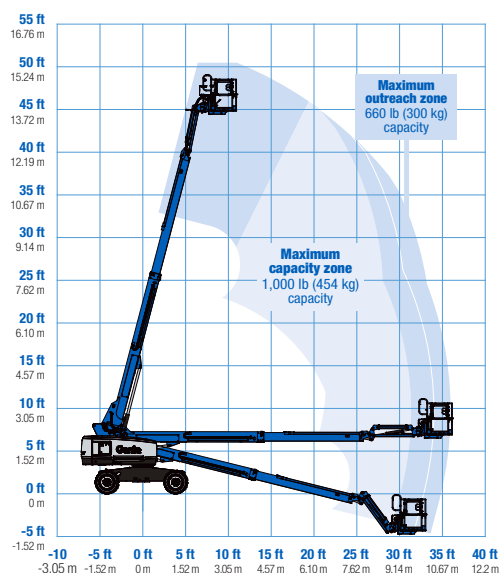
## Power

Power source	Deutz D2011L03i, 36 kW (48 hp)
Auxiliary power unit	12 V DC
Hydraulic tank capacity	144 L
Fuel tank capacity	132 L

Weight***	7,282 kg	16,054 lb
-----------	----------	-----------

Standards Compliance	AS 1418.10
----------------------	------------

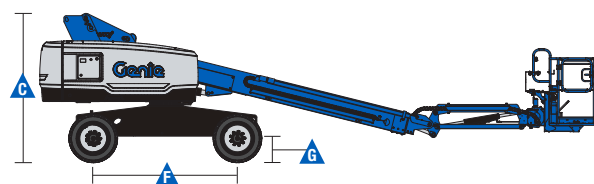
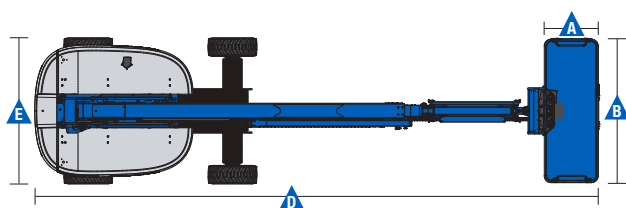
## Range Of Motion S-45 XC



\* The metric equivalent of working height adds 2 m to platform height. U.S. adds 6 ft to platform height.

\*\* Gradeability applies to driving on slopes. See operator's manual for details regarding slope ratings.

\*\*\* Weight will vary depending on options and/or country standards.



# Self-Propelled Telescopic Booms

## S®-45 XC™

### Features

#### Standard Features

##### Measurements

###### S-45 XC

- 15.56 m (50 ft 6 in) working height
- 11.02 m (36 ft 2 in) horizontal reach
- 300 kg (660 lb) unrestricted and 454 kg (1,000 lb) restricted lift capacity

##### Productivity

- Self-leveling platform
- 160° hydraulic platform rotation
- Thumb rocker steering
- Proportional joystick controls
- Drive enable
- Alarm package: flashing beacon and travel alarm
- AC power cord to platform
- Horn
- Hour meter
- Tilt alarm
- Descent alarm
- 360° continuous turntable rotation
- Locking turntable covers
- Positive traction drive
- Two speed wheel motors
- Entry Toeboard
- Lift Guard™ Contact Alarm
- Lift Tools™ Work Tray
- Lift Connect™ Telematics
- Lockable platform control box cover
- Hydraulic oil cooler

##### Power

- 12 V DC auxiliary power
- Anti-restart engine protection
- Auto engine fault shutdown
- Intake air heater (Deutz engine)

##### Platform

- Steel 2.44 m (8 ft) tri entry with side swing gate

##### Jib

- 5 ft (1.52 m) jib boom

##### Engine

- Deutz D2011L03i, 36 kW (48 hp)

##### Tire Options

- Rough terrain foam-filled
- Rough terrain non-marking foam-filled (standard)

##### Axles

- Active Oscillation, 4WD

#### Options & Accessories

##### Productivity Options

- Lift Power™
  - 7.5 kW 240 V 50 Hz Generator
- Lift Guard Platform Mesh - Half
- Air line to platform
- Specialty hydraulic oil (cold weather, fire resistant, or biodegradable)
- Panel cradle package
- Pipe cradle package
- Tow package
- Work light package
- Operator Protective Structure
- Fall Arrest Bar\*

##### Power Options

- Diesel catalytic scrubber muffler
- Diesel catalytic purifier muffler

\* Fall arrest bar not available with panel cradle and vice versa

