

# Self-Propelled Telescopic Booms

## SX-135 XC™

### Specifications

**Model** SX-135 XC

Measurements	Metric	US
Working height maximum*	43.15 m	141 ft
Platform height maximum	41.15 m	135 ft
Horizontal reach maximum	27.43 m	90 ft
Below ground reach	6.00 m	19 ft 8 in
<b>A</b> Platform length	0.91 m	3 ft
<b>A</b> Platform width	2.44 m	8 ft
<b>C</b> Height - stowed	3.05 m	10 ft
<b>D</b> Length - stowed	19.76 m	64 ft 10 in
Length - transport (jib tucked under)	13.28 m	43 ft 7 in
<b>E</b> Width - axles retracted	2.49 m	8 ft 2 in
Width - axles extended	3.94 m	12 ft 11 in
<b>F</b> Wheelbase - axles retracted	4.11 m	13 ft 6 in
Wheelbase - axles extended	4.11 m	13 ft 6 in
<b>G</b> Ground clearance - center	0.38 m	1 ft 3 in

### Productivity

Lift capacity	300 kg / 454 kg	660 lb / 1,000 lb
Platform rotation	160°	
Vertical jib rotation - up/down	70° / 55°	
Turntable rotation	360° continuous	
Turntable tailswing - axle retracted	1.14 m	3 ft 9 in
Turntable tailswing - axle extended	1.70 m	5 ft 7 in
Drive speed - stowed	4.3 km/h	2.7 mph
Drive speed - out of stowed	0.65 km/h	0.4 mph
Gradeability - stowed**	35%	
Turning radius - axle retracted: inside	8.03 m	26 ft 4 in
outside	9.96 m	32 ft 8 in
Turning radius - axle extended: inside	2.90 m	9 ft 6 in
outside	6.17 m	20 ft 3 in
Controls	12 V DC proportional	
Tyres	445D50/710HD	

### Power

Power source	Deutz TD2011L04i, 74 hp (55 kW)	
Auxiliary power unit	12 V DC	
Hydraulic tank capacity	227 L	60 gal
Fuel tank capacity	151 L	40 gal

### Weight\*\*\*

4WD	21,636 kg	47,699 lb
-----	-----------	-----------

### Standards Compliance

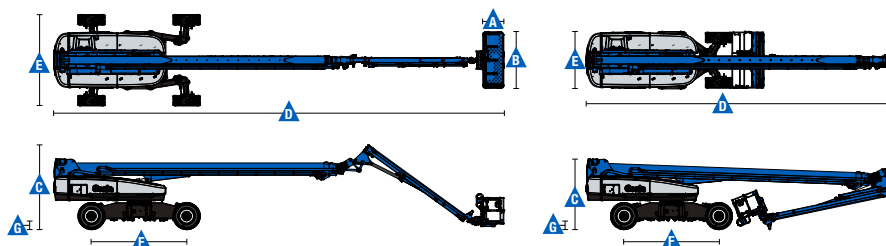
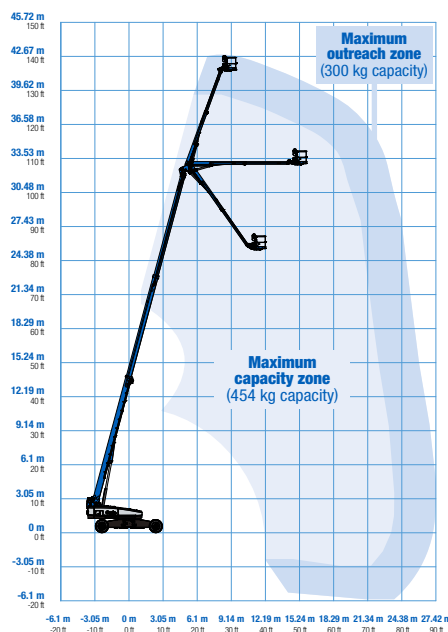
AS 1418.10

\* The metric equivalent of working height adds 2 m to platform height. U.S. adds 6 ft to platform height.

\*\* Gradeability applies to driving on slopes. See operator's manual for details regarding slope ratings.

\*\*\* Weight will vary depending on options and/or country standards.

### Range Of Motion SX-135 XC



# Self-Propelled Telescopic Booms

SX-135 XC™

## Features

### Standard Features

#### Measurements

##### SX-135 XC

- 43.15 m (141 ft) working height
- 27.43 m (90 ft) horizontal reach
- 300 kg (660 lb) unrestricted and 454 kg (1,000 lb) restricted lift capacity

#### Productivity

- X-chassis™ extendable axles
- 5.49 m (18 ft) to 9.14 m (30 ft) Telescoping Jib-Extend™
- Self-levelling platform
- 160° Hydraulic platform rotation
- Proportional joystick controls
- Hydraulic oil cooler
- Thumb rocker steering
- Drive enable
- AC power to platform
- Horn
- Hour meter
- Tilt alarm
- Descent alarm
- Alarm package
- 360° continuous turntable rotation
- Positive traction 4WD
- Two speed wheel motors
- Four wheel high angle steer
- Four steering modes: front, rear, crab and coordinated
- On board full diagnostics and engine monitoring display
- Ground control box cover
- Certified load sensor
- Telematics-Ready Connector
- Hydraulic oil cooler
- Lockable platform control box cover

#### Power

- 7.5 kW generator - 240V/50 Hz
- 12 V DC auxiliary power
- Auto engine fault shutdown
- Swing out engine tray

#### Platform

- Steel 2.44 (8 ft) tri-entry platform with side swing gate

#### Engine

- Deutz turbo diesel 55 kW (74 hp)

#### Drive/Steer

- 4WD
- 4WS

#### Axle

- Extendable axles

#### Tyres

- Rough terrain foam-filled

### Options & Accessories

#### Productivity Options

- Half-mesh platform inserts with swing gate
- Hostile environment package<sup>(1)</sup>
- Work light package
- Biodegradable hydraulic oil
- Airline to platform<sup>(1)</sup>
- Operator Protective Structure
- Operator Protective Alarm

#### Power Options

- Diesel catalytic purifier muffler
- Diesel scrubber/catalytic muffler
- Intake air pre-cleaner



<sup>(1)</sup> Factory-fit option only