

EC600 SERIES

ELECTRIC BOOM LIFTS



Performance

Platform Height		
EC600SJ/H600SJ	60 ft 3 in.	18.36 m
EC600SJP/H600SJP	60 ft 4 in.	18.39 m
Horizontal Outreach		
EC600SJ/H600SJ	43 ft 3 in.	13.18 m
EC600SJP/H600SJP	44 ft 5 in.	13.54 m
Swing	400° Non-Continuous	
Platform Capacity	500 lb	227 kg
Platform Rotator	180° Hydraulic	
Jib (Range of Articulation)		
EC600SJ/H600SJ	145 Degrees - Vertical	
EC600SJP/H600SJP	145 Degrees - Vertical	180 Degrees - Horizontal
Weight ¹		
EC600SJ/H600SJ	17,210 lb	7,807 kg
EC600SJP/H600SJP	17,210 lb	7,807 kg
Max. Ground Bearing Pressure ²		
EC600SJ/H600SJ	52 psi	3.7 kg/cm ²
EC600SJP/H600SJP	51 psi	3.6 kg/cm ²
Drive Speed	3.0 mph	4.8 km/h
Gradeability 2WD	30%	
Gradeability 4WD	45%	
Turning Radius		
Inside	4 ft	1.22 m
Outside	15 ft 4 in.	4.67 m

1. Certain options or country standards increase weight.

2. Ground bearing pressure applies to standard tires.

Standard Specifications

Power Source

Electrical System	48V DC	
Batteries	8 x 6V, 415 amp-hr	
Drive Motors	Dual Electric Traction	
Generator Set (H Models)		
Diesel Engine		
Kubota 45 amp	6.7 hp	4.99 kW
Fuel Tank Capacity	13 gal	49.21 L

Hydraulic System

• Capacity	48 gal	181.7 L
• Motor/pump	Series Wound Motor/Gear Pump	

Tires

• Standard	36 x 14-22.5 Non-Marking Foam Filled	
------------	--------------------------------------	--

Standard Features

- 6 ft (1.83 m) Articulating Jib
- 6 ft (1.83 m) Vertical and Lateral
- Articulating Jib (EC/H600SJP Only)
- Platform Console Machine Status Light Panel*
- 110V-AC GFI Receptacle in the Platform
- Tilt Light and Alarm
- Hourmeter
- Battery Condition Indicator
- Lifting/Tie Down Lugs
- 400 Degree Non-Continuous Rotation
- Removable Battery Box
- Oscillating Axle
- Manual Descent
- Automatic Traction Control (ATC)
- SCR Automatic Battery Charger
- All Motion Alarm
- Platform 30 x 72" (.76 x 1.83 m) Side Entry
- Telematics-Ready Harness
- SkyGuard SkyLine™
- Load Sensing System



Accessories & Options

- SkySense™
- 30 x 48 in. (0.76 x 1.22 m) Platform
- Soft Touch System (EC/H600SJ only)
- Platform Padding (30 x 72 in. Platform)
- 1200W Inverter
- Operators Tool Tray
- Inward Self-Closing Swing Gate
- Hostile Environment Kit³
- UL® EE Rating⁴
- Tow Package⁵
- Light Package⁶
- Cold Weather Package, Diesel⁷
- Platform Worklights
- Flashing Amber Beacon
- AGM Batteries, 390 amp-hr

3. Includes console cover, boom wipers and cylinder bellows.

4. Not available on multi-powered models.

5. 2WD only.

6. Includes head and tail lights, platform worklights and beacon.

7. Includes hydraulic tank heater, battery heater, and heated pad for block.

*Provides indicator lights at platform control console for system distress, low fuel, 5 degree tilt light and footswitch status.

Note: Some options may increase lead time, and some option combinations may not be available.

EC600 SERIES

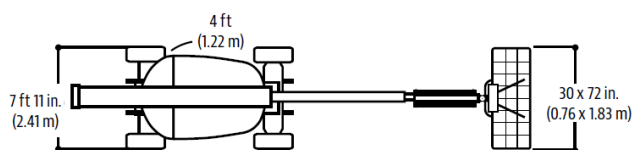
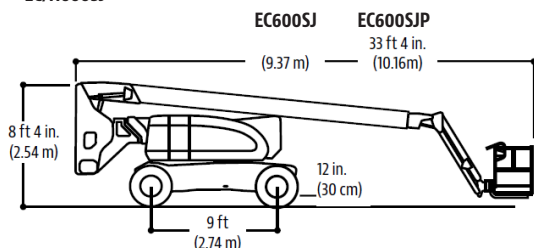
ELECTRIC BOOM LIFTS



Dimensions

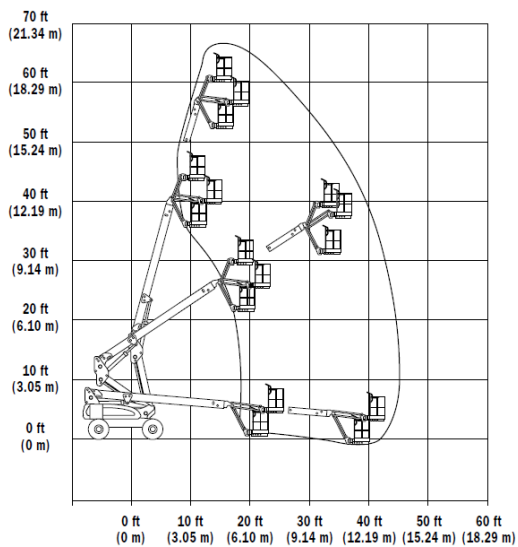
All dimensions are approximate.

EC/H600SJ
EC/H600SJ



Reach Diagrams

EC600SJ



EC600SJP

