

X13J PLUS

COMPACT CRAWLER BOOM

JLG®

Performance

Working Height	13.30m
Platform Height	11.30 m
Working Outreach	7.08 m
Up & Over Height	4.90 m
Swing (non continuous)	360°
Jib - overall length	1.68 m
Jib - range of articulation (+/-)	89° (+0/-89°)
Platform Capacity	230 kg unrestricted
Platform size	0.60 m x 1.31 m
Basket Rotation	124° (+/- 62°)
Stowed width	1.31 m
Machine weight ¹	2,185 kg
Gradeability	28%
Maximum operating slope	16°
Max. Approach / Depart angles	Front 20° / Rear 23°
Width of Undercarriage (Retracted/Extended)	0.75 m / 1.10 m

¹ Certain options or country standards may increase weight and/or dimensions.

Standard Specifications

Power Source

Power Source Petrol

- Engine Honda iGX390 11.7 kW Petrol
- AC electric motor 230 V, 50 Hz 2.2 kW

Power Source Diesel

- Hatz 1B40 – 7.5 kW (10HP) Diesel
- AC electric motor 230 V, 50 Hz 2.2 kW

Power Source Battery

- 100 Ah/ 48 V Electric engine with Lithium battery package including battery charger

Tracks

- Low profile non marking rubber tracks 1.24 m x 0.18 m x 0.30 m

Standard Features

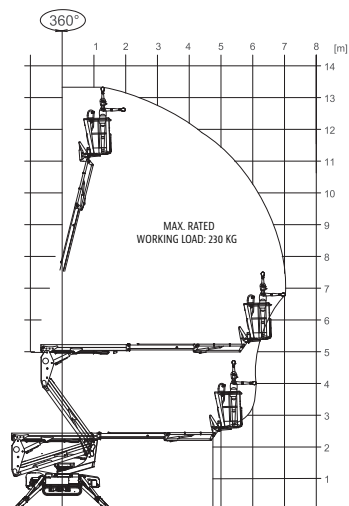
- 0.69 m x 1.34 m Aluminium 2 person platform
- SkyGuard
- Slide bar rear entry
- Footswitch
- Full proportional control
- Articulating jib
- Remote Control (via cable to platform)
- Full Remote Control of drive and stabilization
- Multi-lingual LCD display on platform console
- Platform console position sensor and lock
- Envelope management load sensing system
- Platform designed for ease of removal/changeover
- Engine protection
- Rubber Outrigger Pads
- Cylinder Rod Protection on Outriggers
- Automatic cut-out when out of level
- Powered track extensions/retraction
- Turntable alignment sensor and gauge
- Emergency descent systems
- Electro-hydraulic controls
- Full pressure hydraulic controls
- Lifting/Tie down points
- Forklift pockets
- AS/NZS 1418.10 Compliance



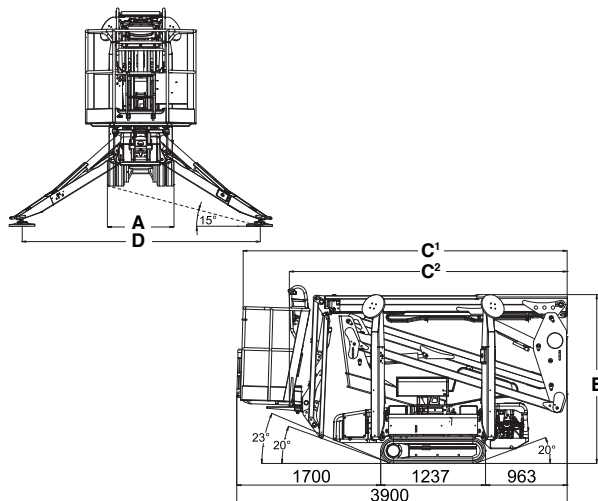
Accessories & Options

- AC Outlet To Platform incl. ELCB
- Fire Extinguisher

Reach Diagram



Dimensions



Dimensions

A. Stowed width (without platform)	0.79 m
B. Stowed height (on tracks)	1.99 m
C1. Stowed length (on tracks) with basket	3.90 m
C2. Stowed length (on tracks) without basket	3.28 m
D. Outrigger footprint	2.80 x 2.80 m