

### **BDT087.RT**

BT28RT | Diesel Rough Terrain Telescopic

## SPECIFICATIONS

| Size                            | Metric      | British          |
|---------------------------------|-------------|------------------|
| Max. Working Height             | 28.60m      | 93ft 10in        |
| Max. Platform Height            | 26.60m      | 87ft 3in         |
| Max. Operating Range(+0.6m)     | 21.90m      | 71ft 10in        |
| Max. Platform Range             | 21.30m      | 69ft 11in        |
| Overall Length(Stowed) <b>A</b> | 11.66m      | 38ft 3in         |
| Overall Length(Transport)       | 11.82m      | 38ft 9in         |
| Overall Width(Stowed) <b>B</b>  | 2.50m       | 8ft 2in          |
| Overall Width(Transport)        | 2.28m       | 7ft 6in          |
| Overall Height(Stowed) <b>C</b> | 2.87m       | 9ft 5in          |
| Overall Height(Transport)       | 2.59m       | 8ft 6in          |
| Platform Size(Length×Width)     | 2.44m×0.91m | 8ft×3ft          |
| Turntable Tailswing             | 1.61m       | 5ft 3in          |
| Ground Clearance <b>D</b>       | 0.41m       | 1ft 4in          |
| Wheelbase <b>E</b>              | 2.80m       | 9ft 2in          |
| Turning Radius(Inside/Outside)  | 1.87m/3.22m | 6ft 2in/10ft 7in |
| Tyres                           | 385/45-28   | 385/45-28        |

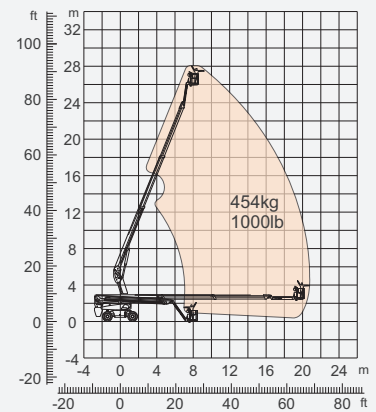
| Performance          |                |                |
|----------------------|----------------|----------------|
| S.W.L                | 454kg          | 1000lb         |
| Max. Occupants       | 3              | 3              |
| Gradeability         | 45%            | 45%            |
| Travel Speed(Stowed) | 6.0km/h        | 3.7mph         |
| Travel Speed(Raised) | 1.1km/h        | 0.7mph         |
| Max. Working Slope   | X-5°/Y-5°      | X-5°/Y-5°      |
| Turret Rotation      | 360°Continuous | 360°Continuous |
| Platform Rotation    | 180°           | 180°           |
| Jib Movement         | 135°           | 135°           |

| Weight         |         |         |
|----------------|---------|---------|
| Overall Weight | 18400kg | 40565lb |

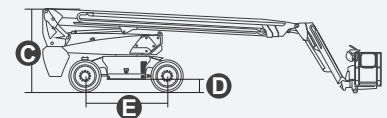
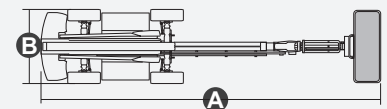
| Power                  |                         |                         |
|------------------------|-------------------------|-------------------------|
| Diesel Engine          | Deutz TD2.9 L4 / 55.4kW | Deutz TD2.9 L4 / 55.4kW |
| Emergency Power System | 12V                     | 12V                     |
| Driving Motor          | 135L                    | 35gal                   |
| Hydraulic Tank         | 165L                    | 43gal                   |



**ENGINE**



**Range Of Motion**



### **BDT087.RT**

BT28RT | Diesel Rough Terrain Telescopic

## FEATURES

### Standard Items

- 2.31m (7ft 7in) Jib
- Front Oscillating Axle
- Four-Wheel Steering
- Four-Wheel Drive
- Self-Leveling Platform
- 180° Left And Right Swing Platform
- Proportional Joystick Controls
- Thumb Rocker Steer
- Drive Enable
- Ac Power Cord To Platform
- Tilt Alarm
- Descent Alarm
- Flash
- Horn
- Hour Meter
- Integral Integrated Special Drive Axle For Construction Machinery
- 360° Continuous Turntable Rotation
- Positive Traction Four Wheel Drive
- Platform Load Sense System
- Fault Diagnosis System
- Operator Anti-crushing Protection System
- Harsh Environment Kits
- 12V DC Auxiliary Power
- Deutz D2.9 L4 55.4kW 2600rpm Diesel Engine
- Hydraulic Oil Radiator
- Anti-restart Engine Protection
- Anti-reverse Engine Device
- Auto Engine Fault Shutdown



Telescopic Boom-BT



Working Height-28m



Jib



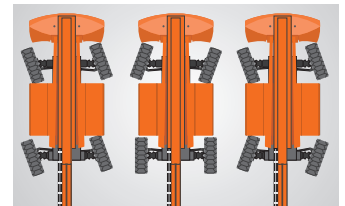
Diesel Engine



Rough Terrain-RT



454kg-Heavy Load



Multiple Steering Modes



Anti Extrusion Device